

HOW DO WE USE OUR TRUE-TRUE?



USE THE ROBOT ONLY WHEN YOUR TEACHER ALLOWS IT



Ask for help if you don't know what to do or how to do something.

USE THE ROBOT CAREFULLY

Do not stop or grab the robot while it is moving. It may get damaged.



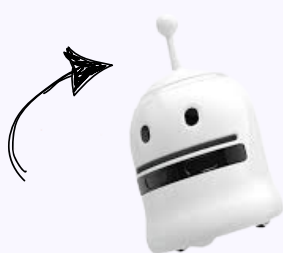
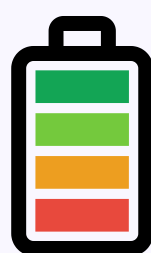
TURN IT OFF WHEN NOT IN USE



This will help save battery.

CHECK THE BATTERY LEVEL

If the light is flashing red, give it to your teacher so it can be charged.



BE CAREFUL WITH THE ANTENNA

The antenna protects our robot.

USE CARDS PROPERLY

Don't lose them or bend them; they are necessary for the robot to work.



MAKE SURE THE ROBOT UNDERSTANDS YOU

The robot will display a light and play a sound when it detects the card.

KEEP THE WORKPLACE CLEAR

Put away what you don't need so the robot can move freely.

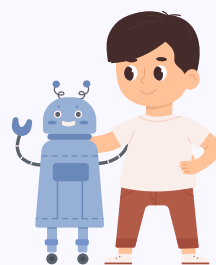


RESPECT YOUR CLASSMATES

Share, collaborate and work together as a team.

ENJOY AND LEARN FROM YOUR MISTAKES

Use the robot to learn and don't worry if you make mistakes.



TURN OFF AND SAVE THE TRUE-TRUE

After finishing the activity, turn off the robot and return it to its place.