

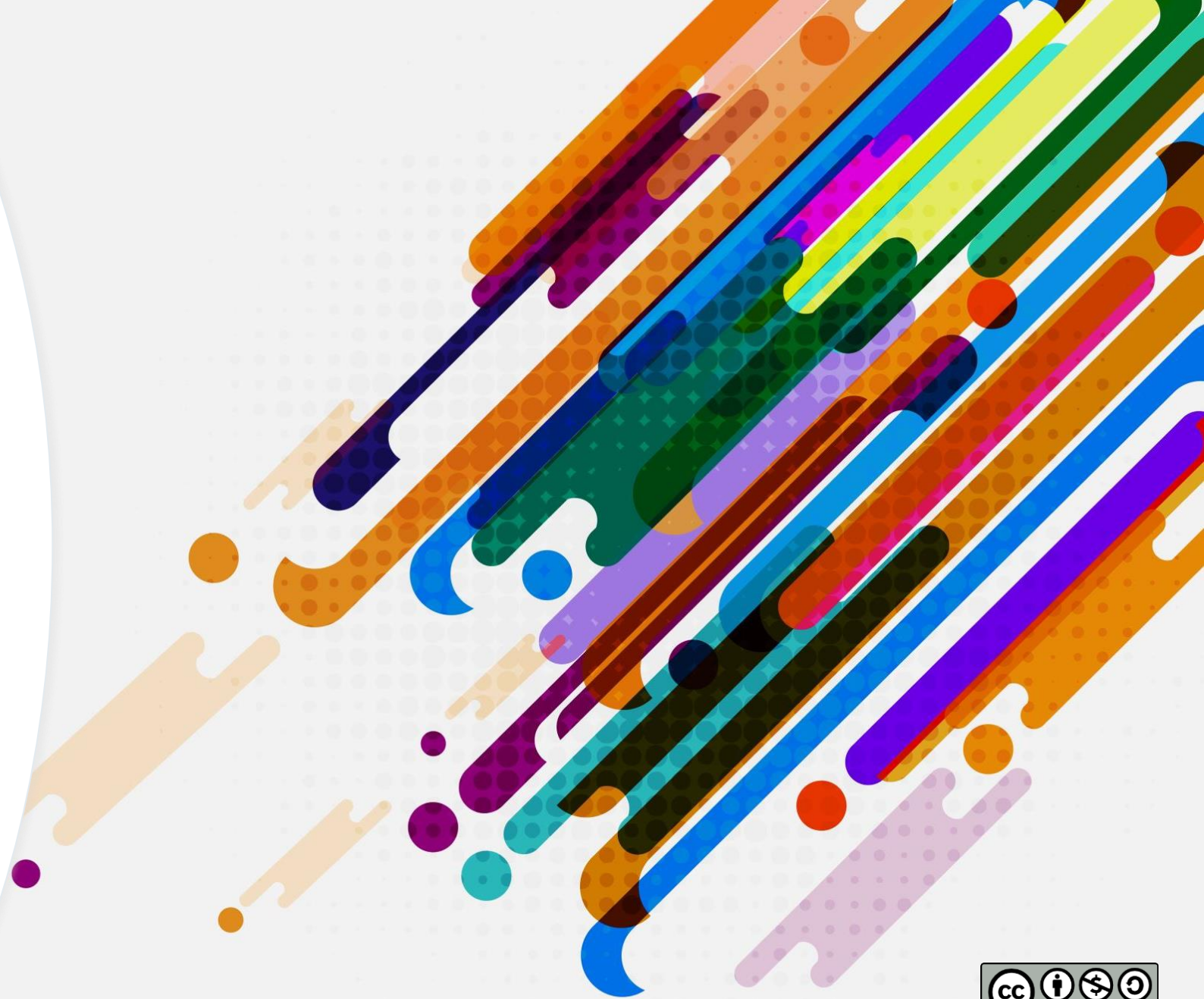


# Yo es que soy así

(Los personajes arquetípicos, o sea, yo).

3º ESO

Modesto Calderón Reina



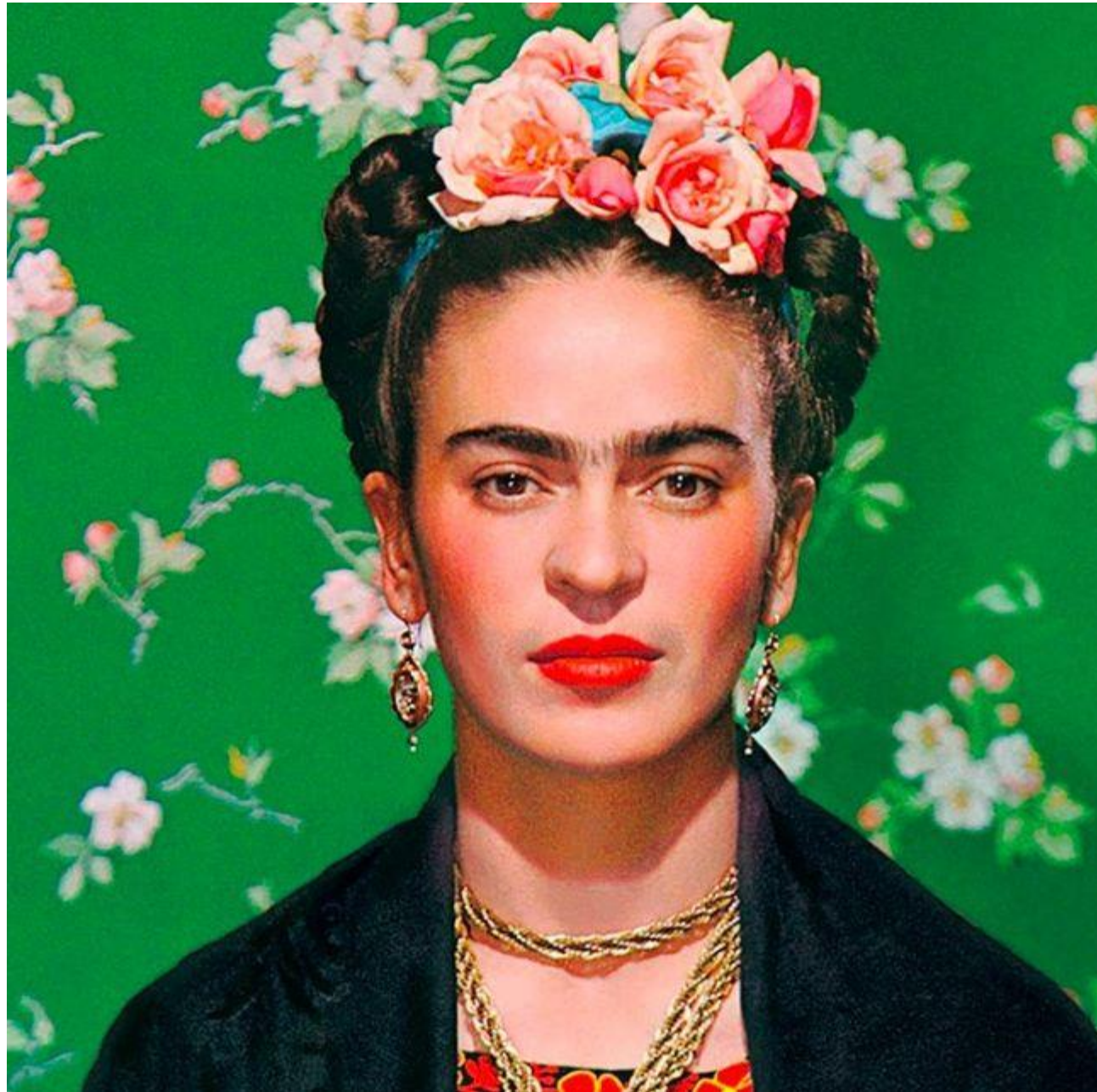


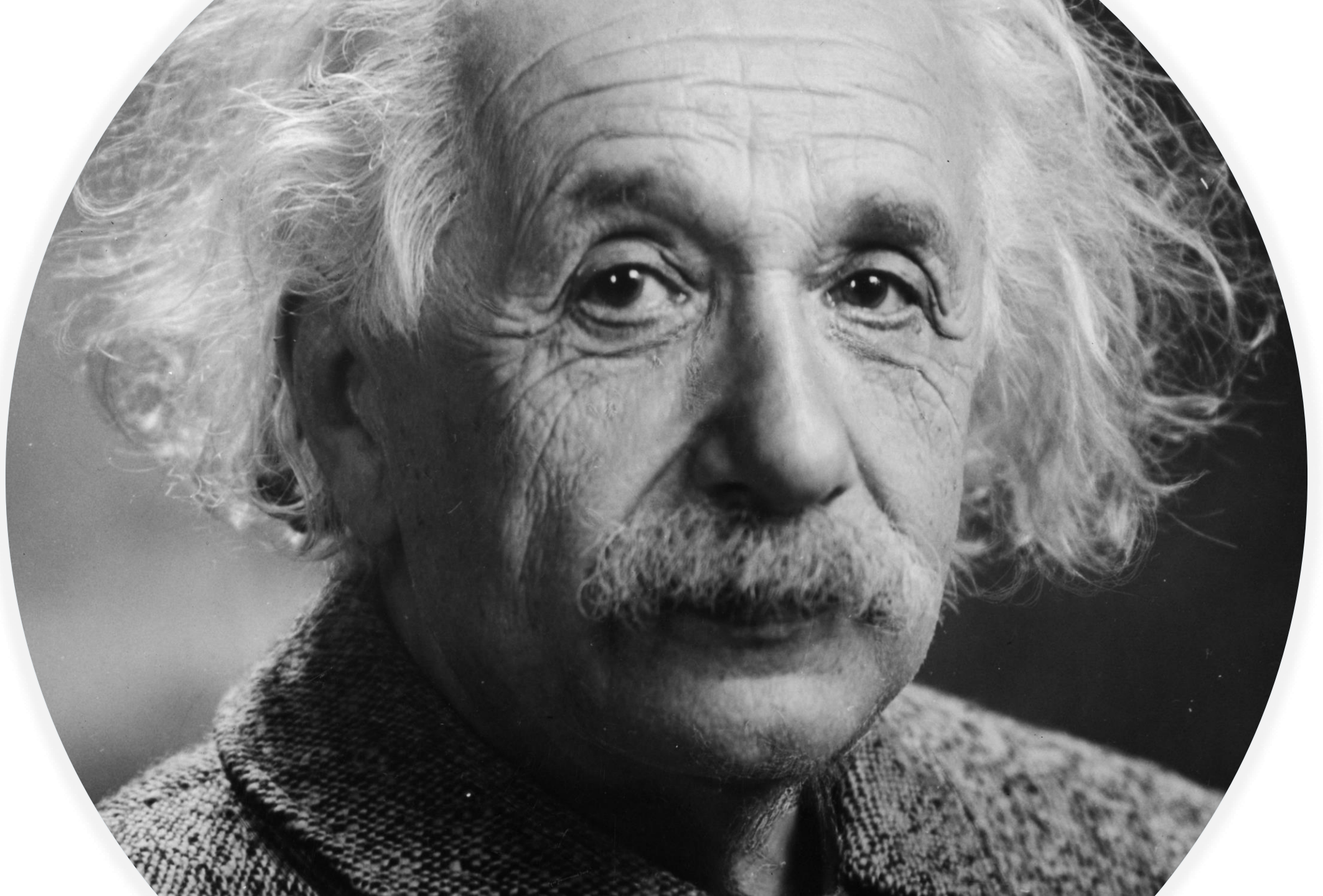
**¿Qué es un  
arquetipo?**

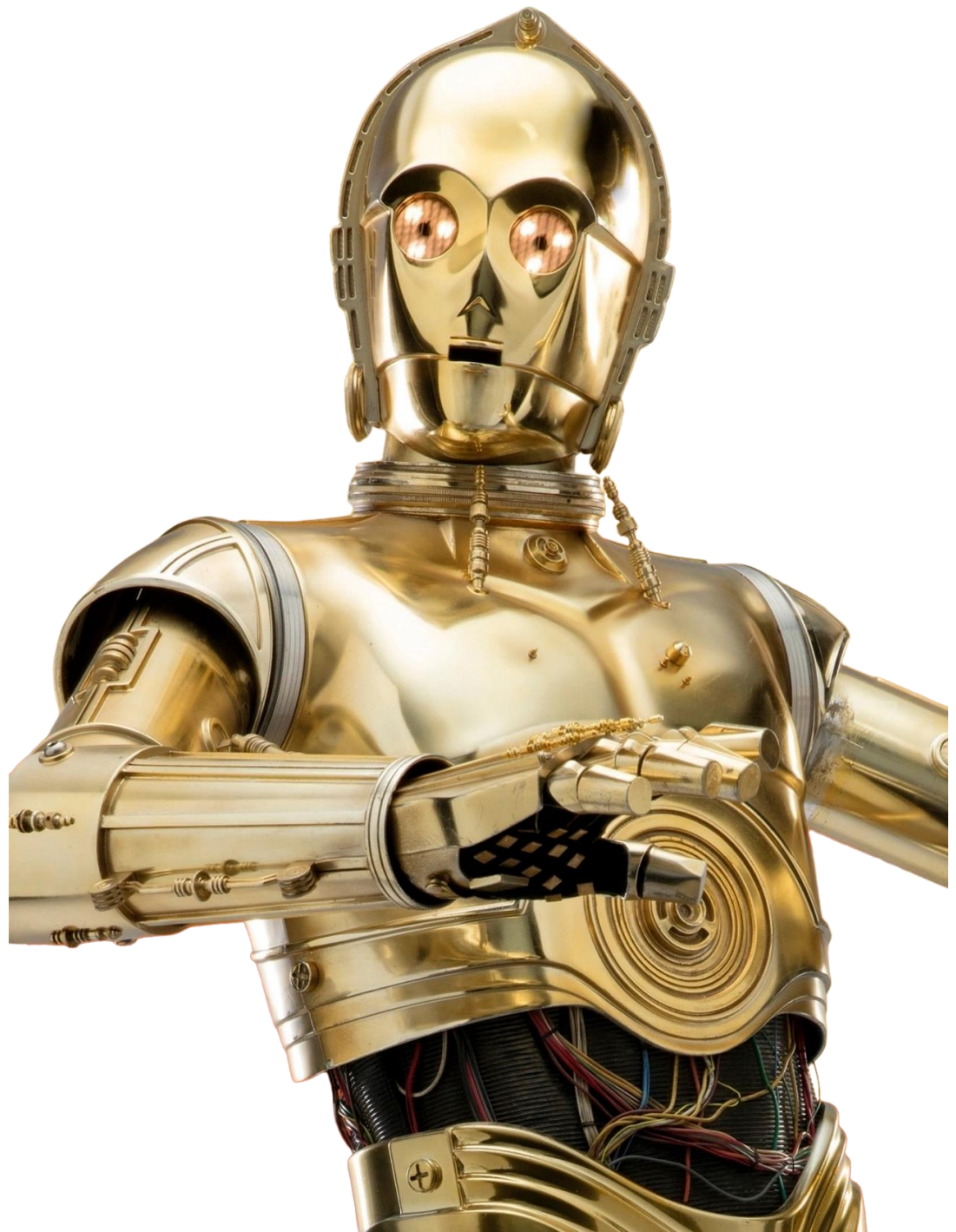





















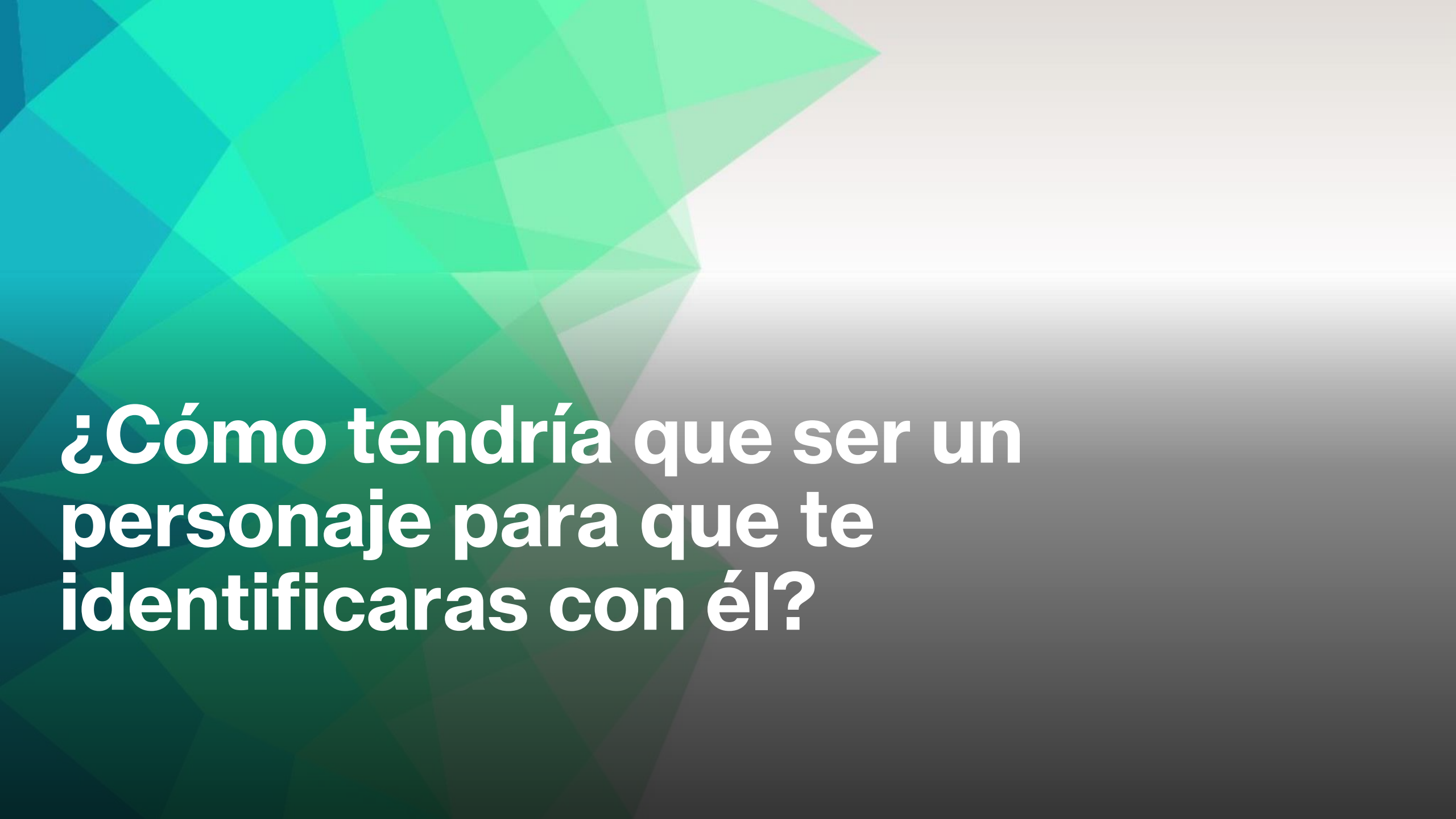
© 2000 Twentieth Century Fox Film Corporation

The background features a complex geometric design. It consists of several overlapping shapes in shades of blue and white. A prominent feature is a series of parallel lines that create a sense of depth and perspective, resembling a stylized 'V' or a series of planes. The lines are white and set against a blue background, creating a high-contrast, modern aesthetic.

**¿Qué significa  
“identificarse”?**

A row of wooden figures, with one red figure standing out in the center. The figures are arranged in a line, receding into the background. The red figure is the only one of its color, making it stand out from the rest of the group.

**¿Qué podemos describir  
de una persona?**



**¿Cómo tendría que ser un personaje para que te identificaras con él?**



---

# El Cid

---



**Melibea**

---





---

# Celestina

---



# Lázaro de Tormes

---



---

# **El ciego (del *Lazarillo de Tormes*)**

---



---

# Don Quijote

---



---

# Sancho Panza

---



---

# La pastora Marcela (de *Don Quijote de la Mancha*)

---



# Don Juan

---



---

**¿Cómo  
serían con  
14 años?**

---






**¿Qué le escribirías a...?**



**El insta de...**

---





**¿Qué he  
aprendido de  
los personajes  
clásicos?  
¡Kahoot!**

---



¿Qué has  
aprendido  
de ti mismo?