

El Clima y la Corriente del Golfo

¿Qué nos cuenta Filomena del cambio climático?





LAND
of the

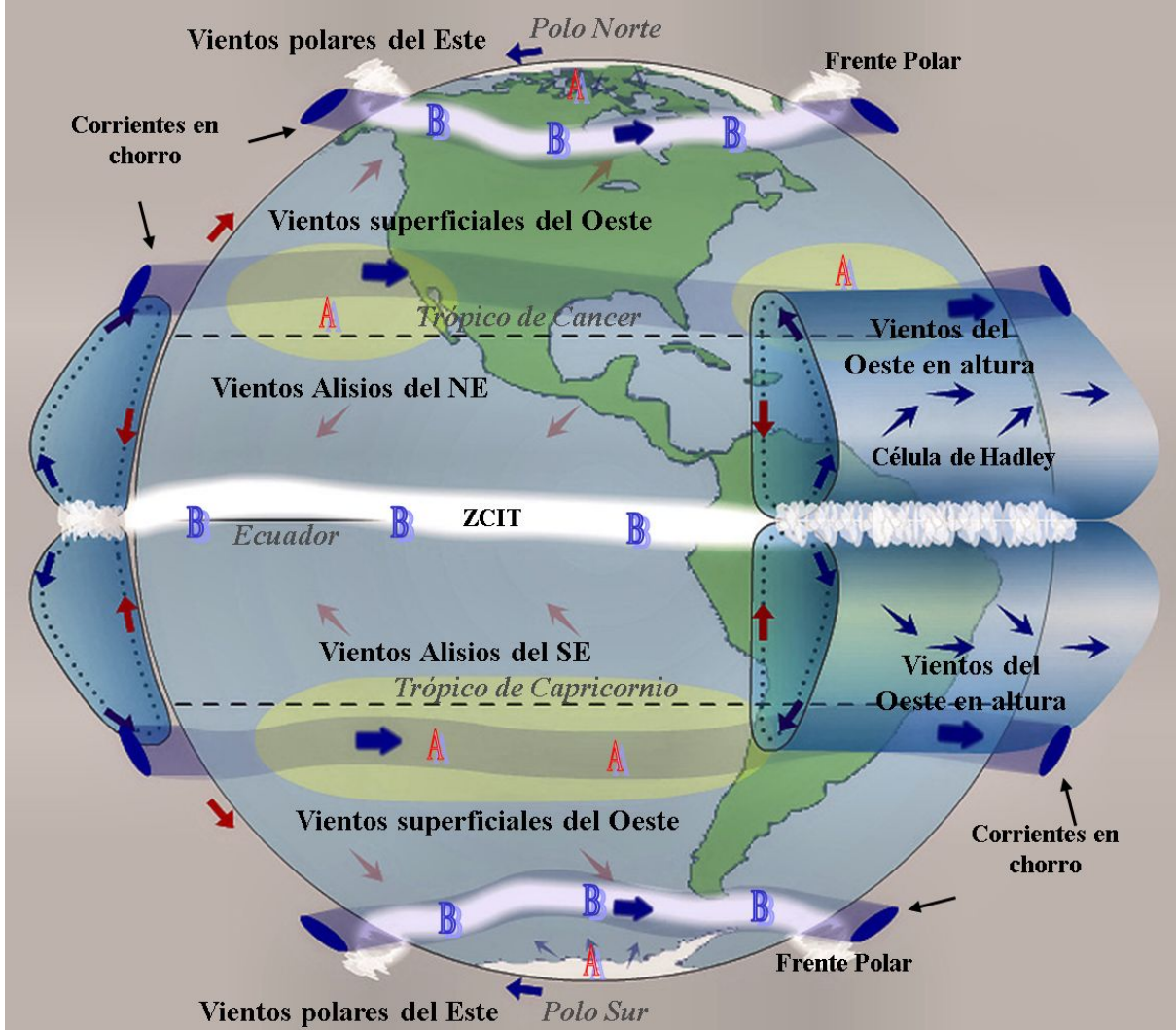
ESKIMAUX'S OF LABRADOR

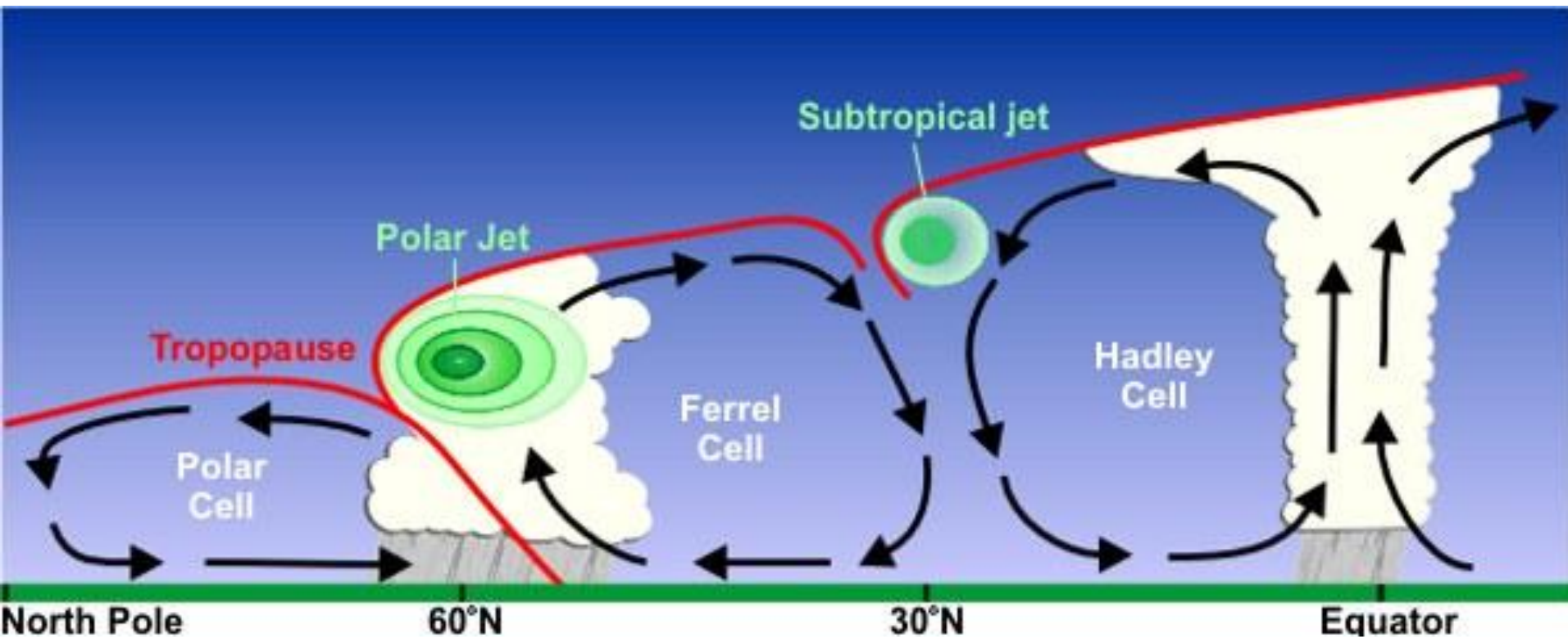
ATLANTIC OCEAN

ATLANTIC OCEAN

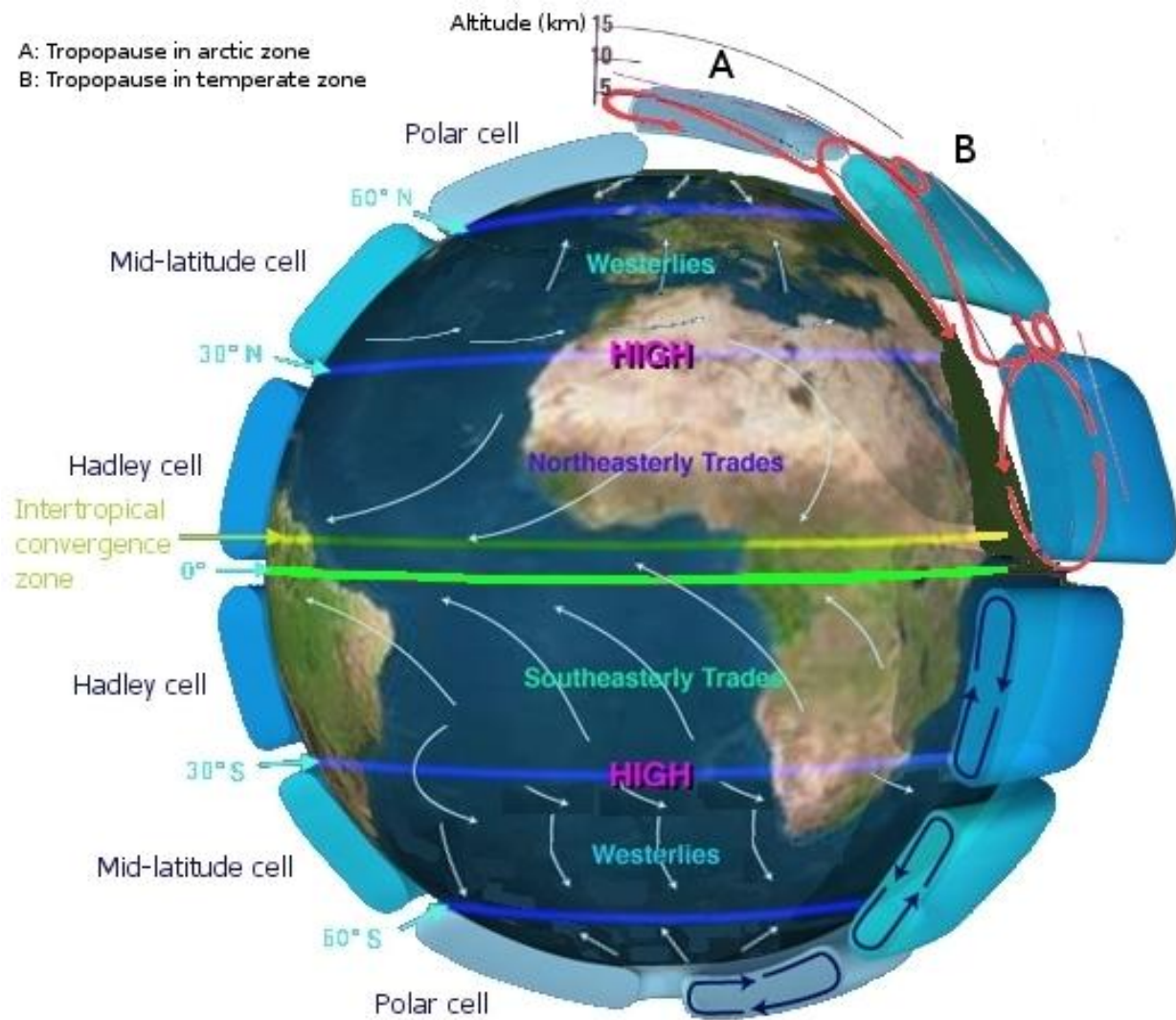
A
CHART
of The
GULF STREAM

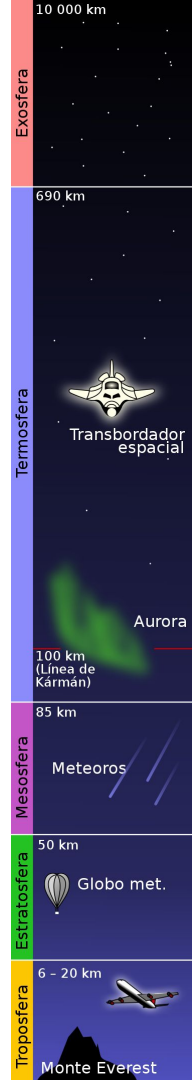
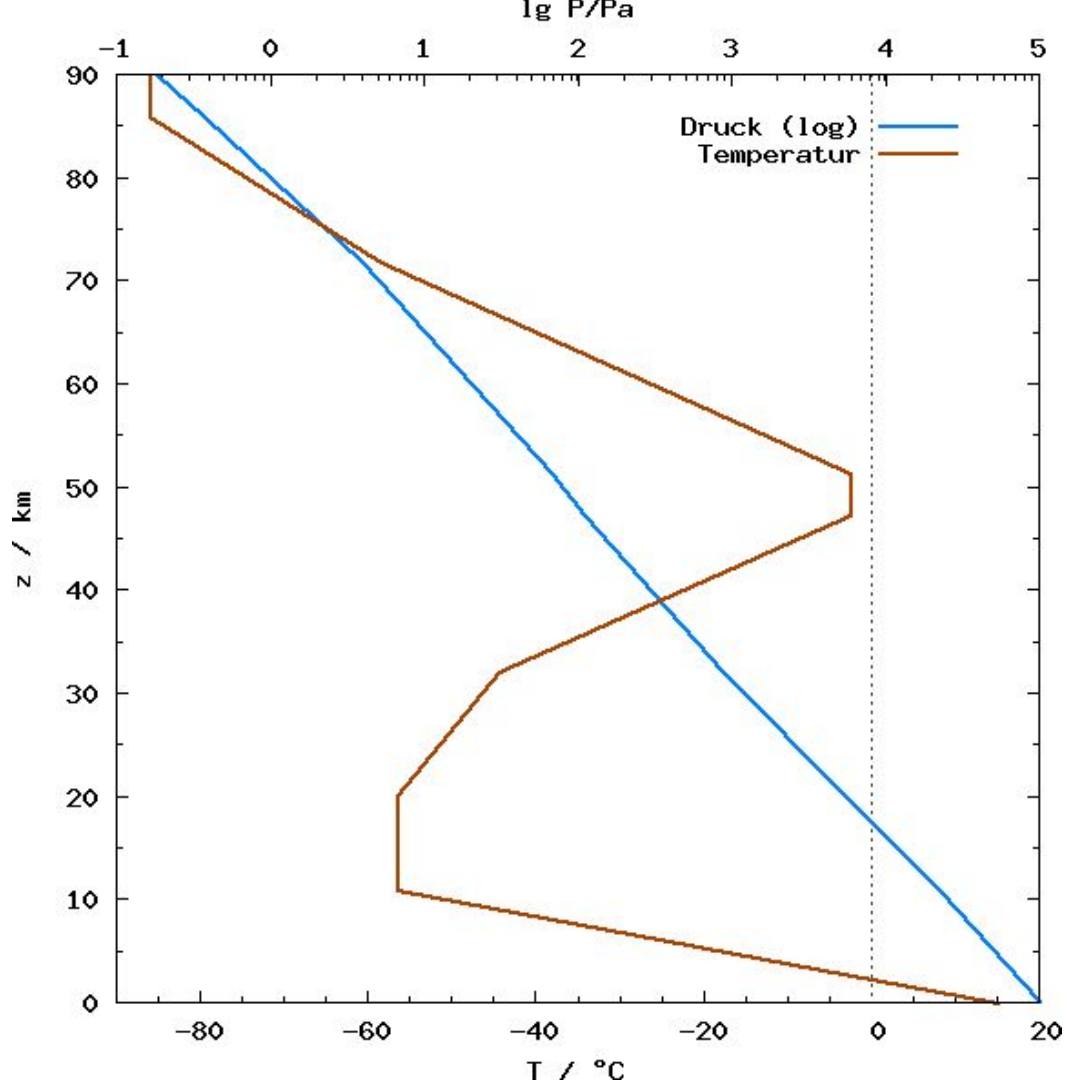
James Poupard, sculp.





A: Tropopause in arctic zone
B: Tropopause in temperate zone





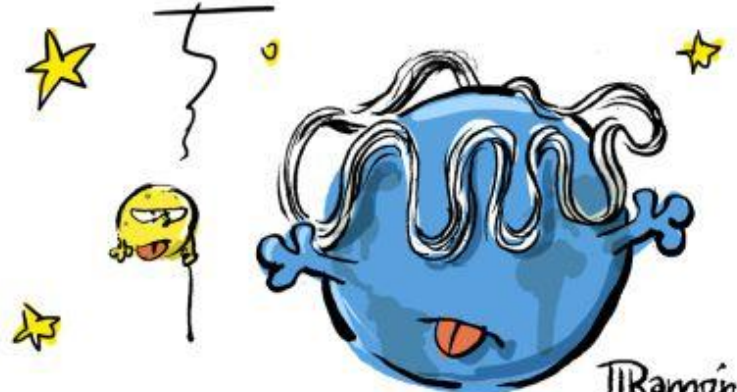
Hipo
Popo
Pota
x
T@mo

CON UN ÁRTICO FRÍO Y SANO EL CHORRO
POLAR ES FUERTE Y VELOZ, PERO CON EL ÁRTICO
RECALENTADO EL CHORRO PIERDE FUERZA

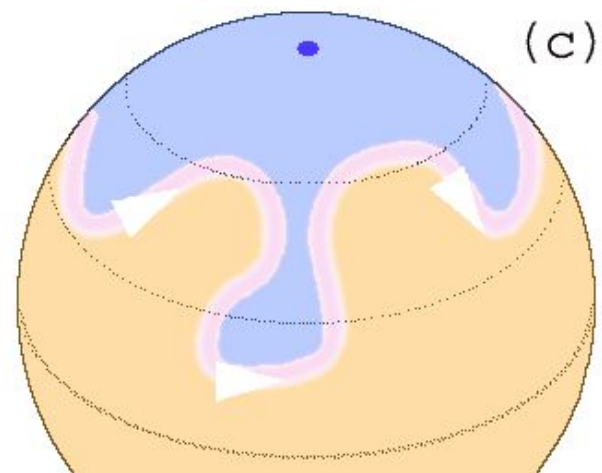
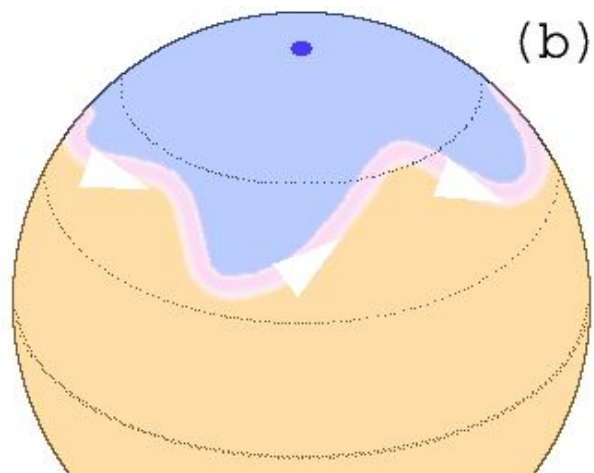
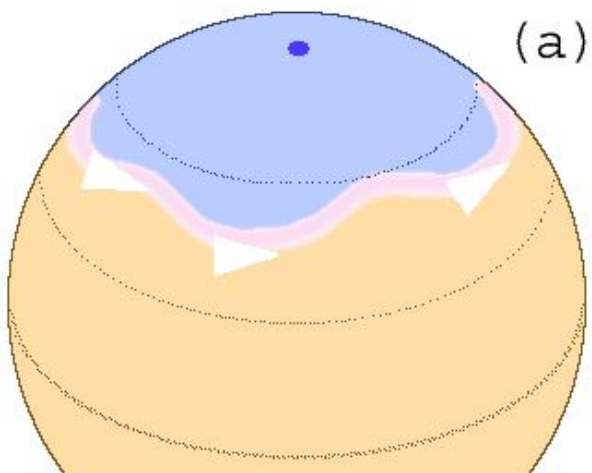


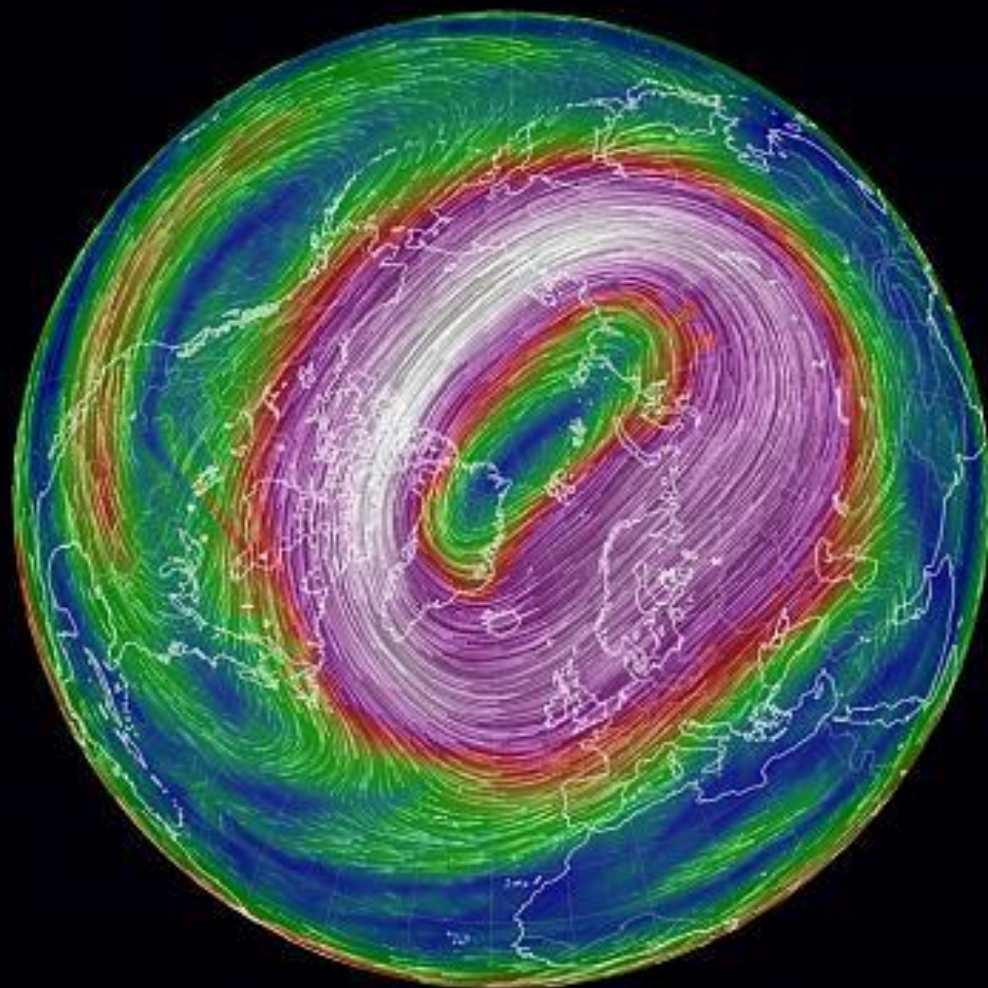
ramonilustracion@gmail.com

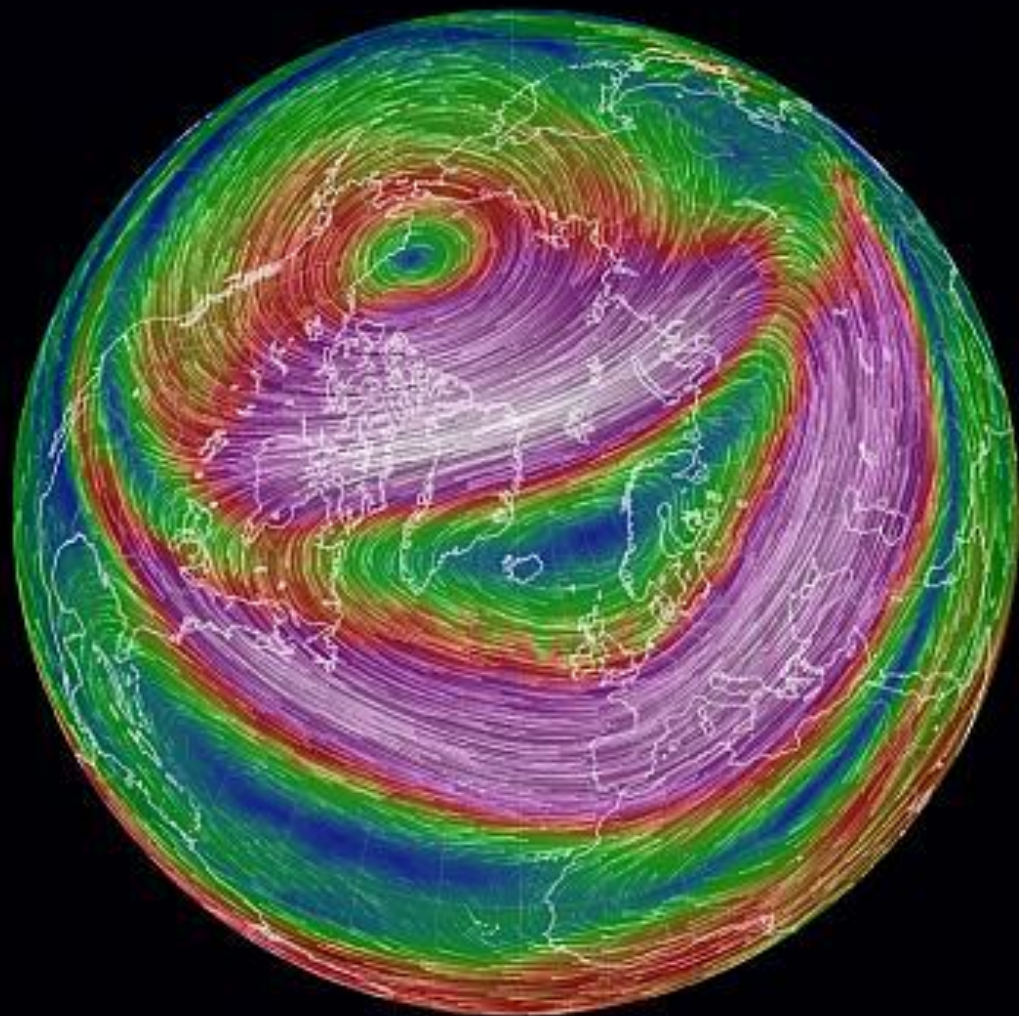
ES CUANDO TE COMEN LAS
CICLOGÉNESIS Y NIEVA EN CANARIAS

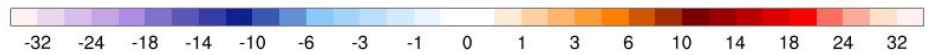
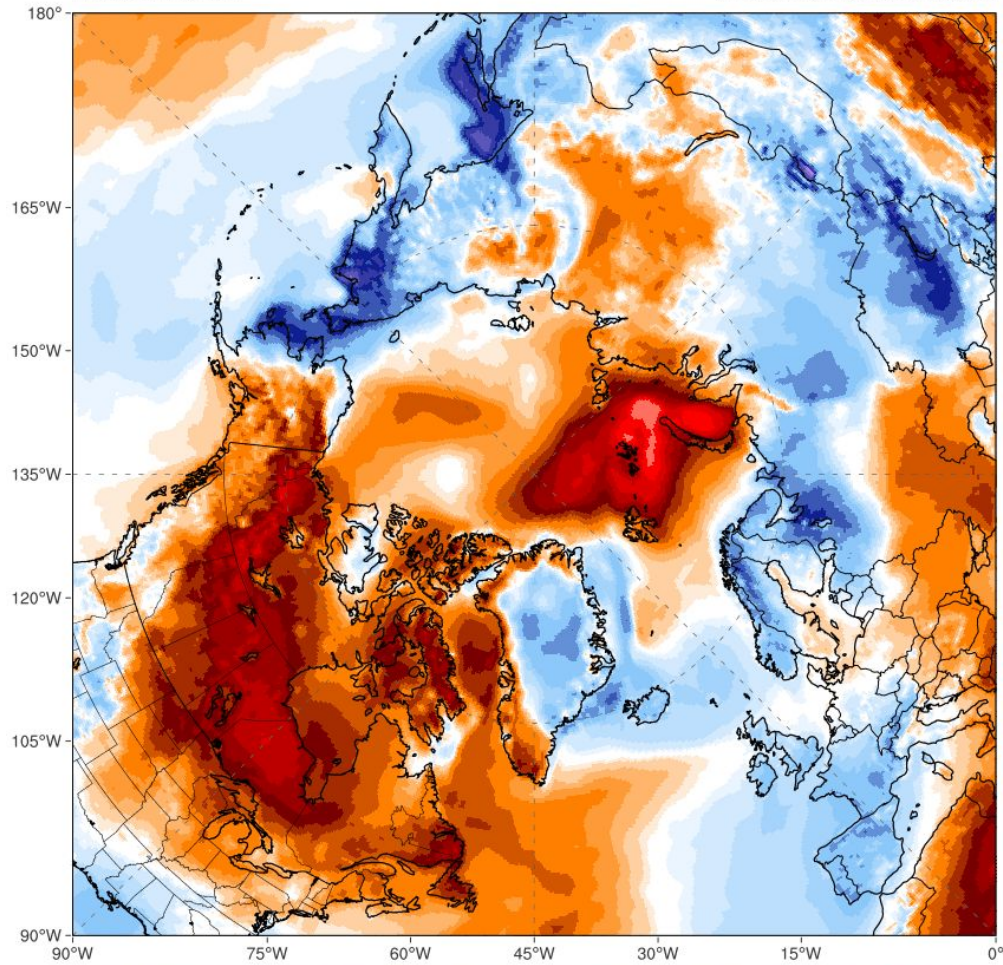


TIRamón

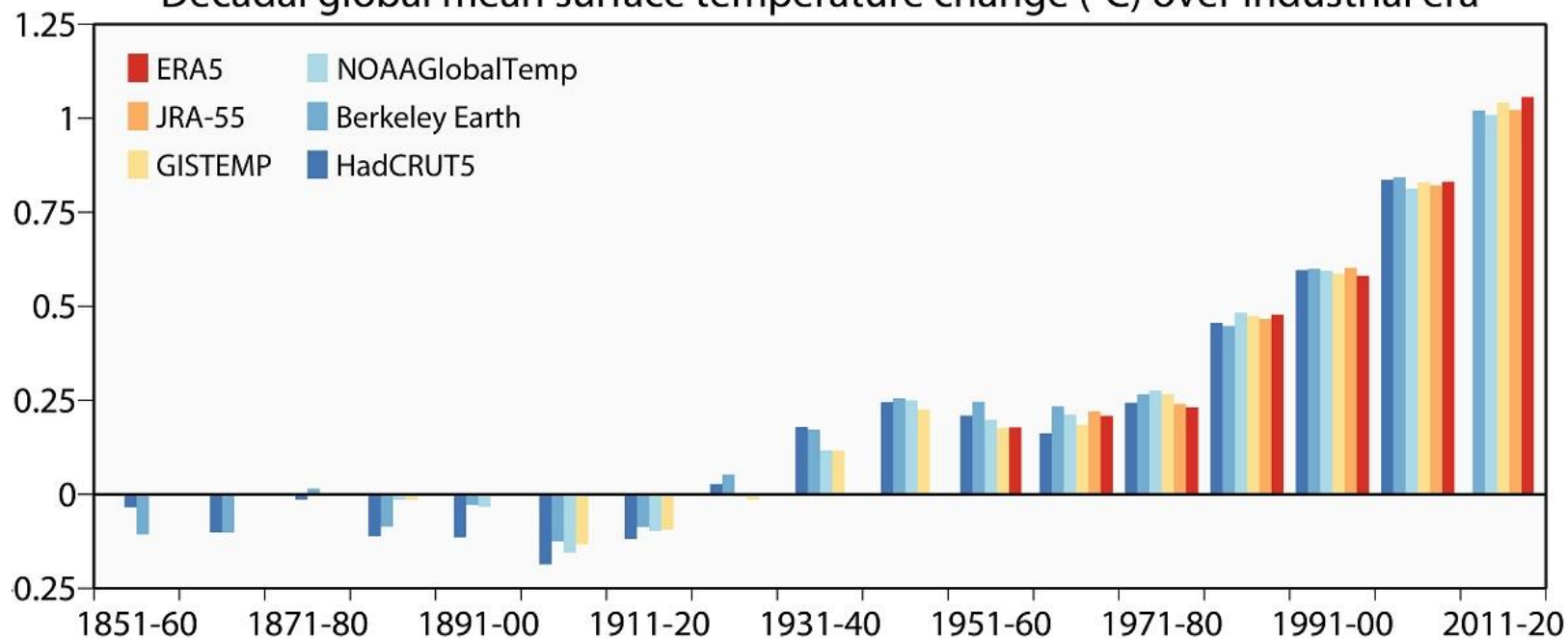








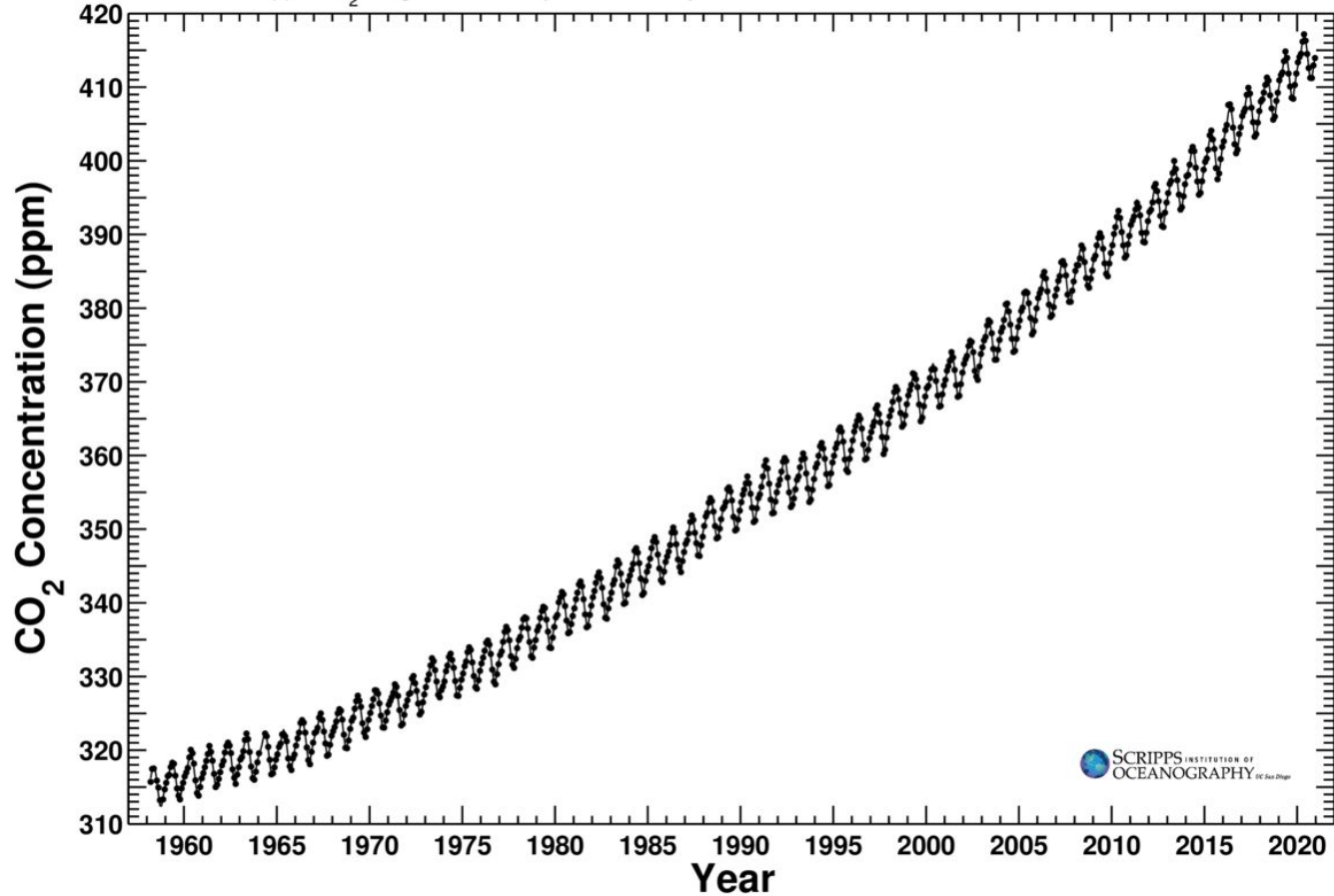
Decadal global mean surface temperature change (°C) over industrial era



Mauna Loa Observatory, Hawaii

Monthly Average Carbon Dioxide Concentration

Data from Scripps CO₂ Program Last updated January 2021



The image features a stylized visualization of global mean temperatures. The background is composed of numerous vertical stripes of varying widths and colors. On the left, the stripes are thin and colored in shades of green and blue, representing cooler temperatures. As they move towards the right, the stripes become progressively thicker and transition through yellow, orange, and red to dark purple, representing a significant warming trend. A horizontal white dashed line runs across the middle of the stripes. At the top center, a black teardrop-shaped callout bubble contains the text 'WE ARE HERE' in white, bold, uppercase letters. The overall composition is simple and uses color and scale to convey the concept of climate change.

**WE
ARE
HERE**

stylised global mean temperatures 1850-2200;
design by @alxrdk based on warming stripes from @ed_hawkins