

# Unit 4.

## Plant kingdom

(Easy reading summary and activities.)

By Inmaculada Rubio Jiménez

# Plants are living things

Plants:

- Are born 

- Breathe 

- Eat 

- Grow 

- Interact

- Reproduce 

- Die 

# Parts of plants

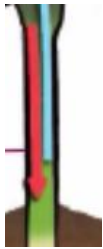
Roots



*fix* the plant to the ground.

*absorb* water and minerals.

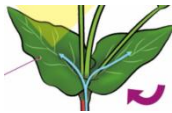
Stems



*support* the plant.

*carry* water and minerals.


Leaves



*make food* for the plant.

*breathe*

# Parts of plants (worksheet 1)

**Roots**  \_\_\_\_\_ the plant to the ground.  
absorb / fix  
\_\_\_\_\_ water and minerals.

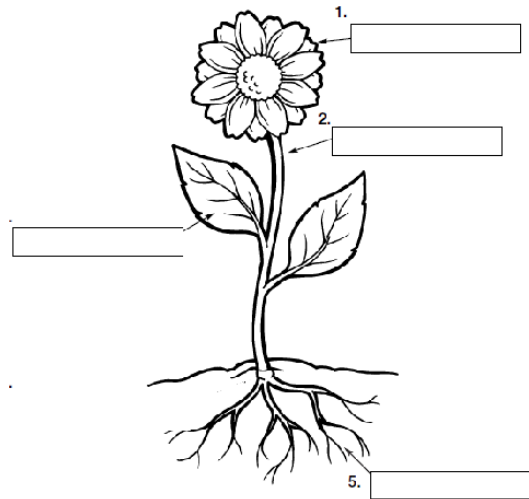
**Stems**  \_\_\_\_\_ the plant.  
support / carry  
\_\_\_\_\_ water and minerals.

**Leaves**  → **make food** for the plant.  
→ **breathe**

# Parts of plants

- Worksheet 2. They can also write what these parts do.

Parts of a plant



Roots stem leaves flower

# Interactive activities / Song

- Song and interactive activities:
- <https://www.youtube.com/watch?v=8e25XXjNjWs>
- <https://www.youtube.com/watch?v=dJjNh2pMSB8>
- <http://www.crickweb.co.uk/ks1science.html>
- [http://www.softschools.com/science/plants/plant\\_parts/](http://www.softschools.com/science/plants/plant_parts/)
- <http://extension.illinois.edu/gpe/case1/c1m1app6.htm>
- <https://www.youtube.com/watch?v=eWjVTxjkmBk>

# Photosynthesis: Plants *make* their food

They Need:

1. Sunlight

2. Carbon

dioxide

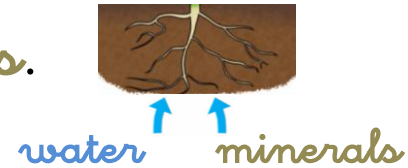
3. Water

4. Minerals

<https://www.youtube.com/watch?v=eWjVTxjkmBk>

# Photosynthesis: Plants make their food

1. **Roots** absorb **water** and **minerals**.



2. The **stem** carries **water** and **minerals** to the **leaves**.



3. The **leaves** absorb **carbon dioxide** and mix it with **water** + **minerals** + **sunlight**.

4. The **leaves** release **oxygen**.

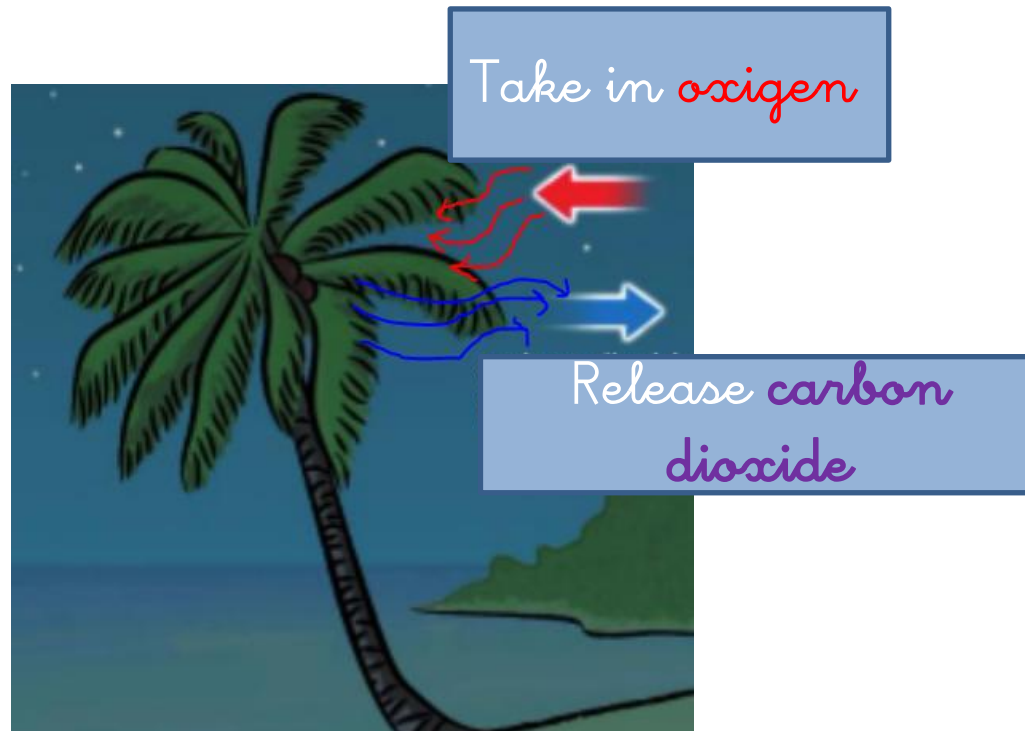




# Respiration

Plants are living things.

Plants breathe



# Reproduction (flowering plants)

**Stamens:**  
produce pollen.

**Stigma:**  
receives the pollen

**Carpel:**  
the seeds develop  
in here

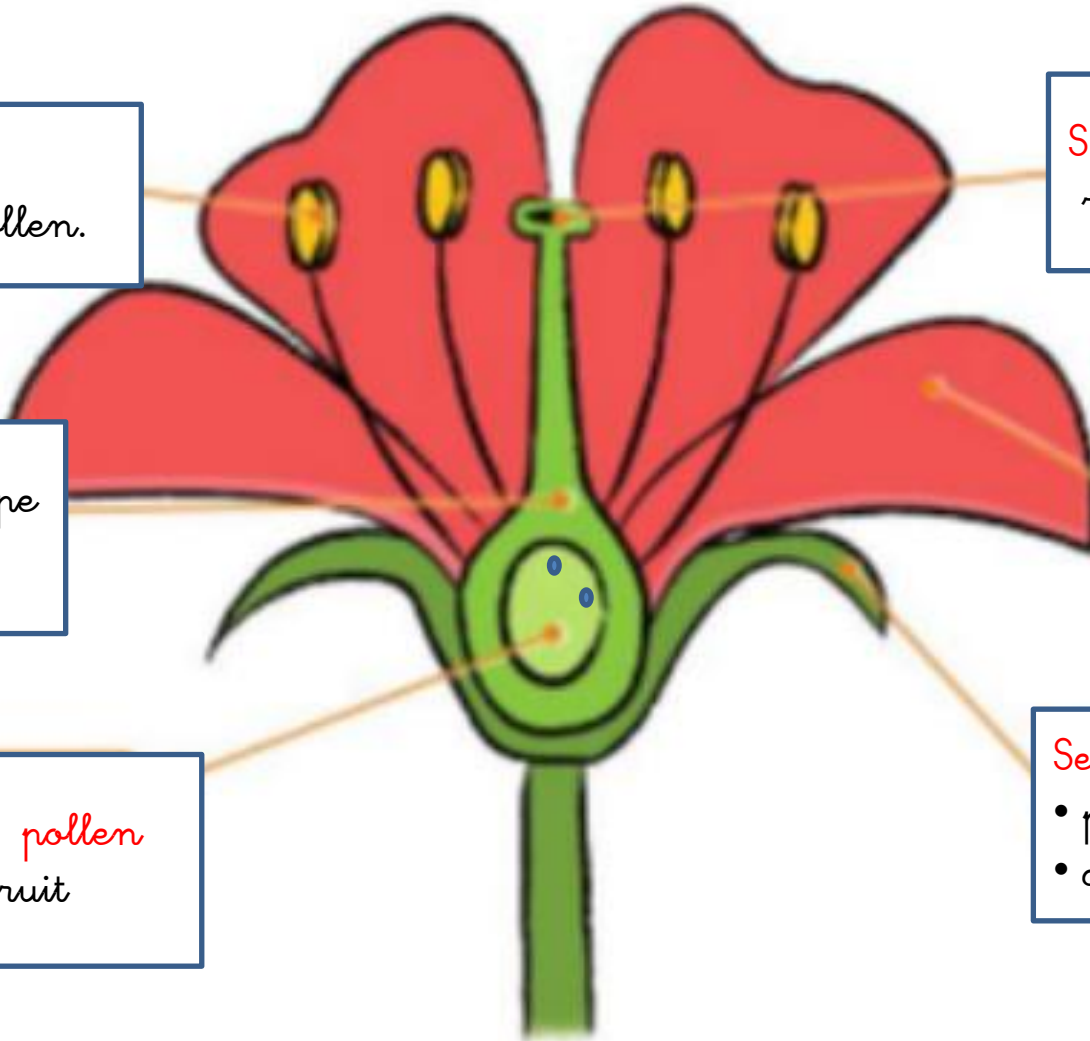
**Petals:**

- attract the insects.
- are colorful

**Ovary and pollen**  
develop a fruit

**Sepals:**

- protect the flower
- are green



# Reproduction (flowering plants)

- [https://quizlet.com/\\_3kc74r](https://quizlet.com/_3kc74r)
- [http://www.bbc.co.uk/schools/scienceclips/ages/9\\_10/life\\_cycles\\_fs.shtml](http://www.bbc.co.uk/schools/scienceclips/ages/9_10/life_cycles_fs.shtml)
- <http://studyjams.scholastic.com/studyjams/jams/science/plants/flowers.htm>

# Pollination

Pollen ∴ travels from  stamen to  stigma

Animal pollination



An insect or bird transfers pollen.

Wind pollination



Wind blows the pollen

# Life cycle of a plant

1. Pollen lands on stigma



2. A seed develops



3. The ovary turns into a fruit  
The petals fall down.



6. The new plant produces flowers.



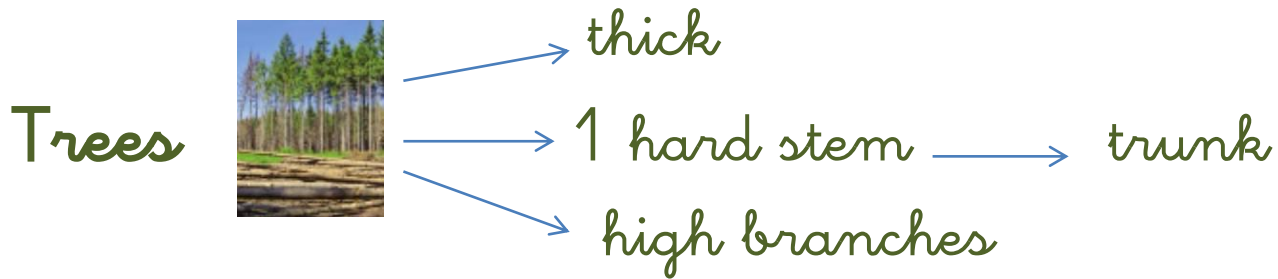
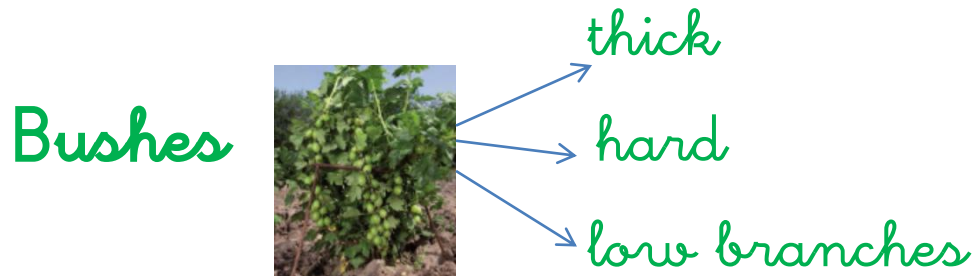
5. A new plant grows



4. The fruit falls and opens.



# Plant classification



# Tree classification

Deciduous / Evergreen

A deciduous tree  
loses its leaves.



An evergreen tree  
Keeps its leaves.



<https://www.youtube.com/watch?v=AN9NdGdR7I4>

# Deciduous or evergreen?

1. Match.

Evergreen



Deciduous



2. Write: evergreen / deciduous.

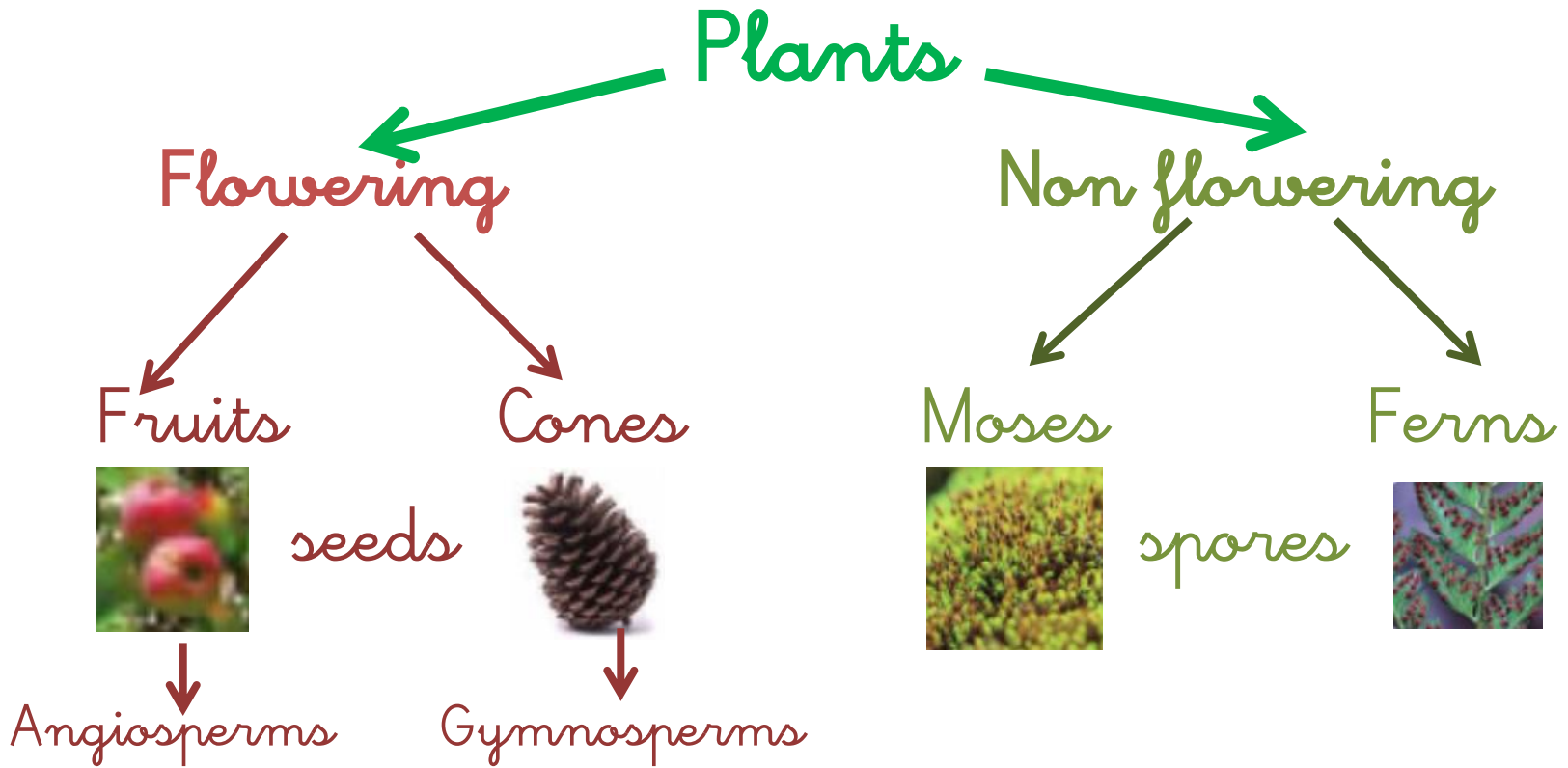
\_\_\_\_\_ trees lose their  
leaves in autumn.

\_\_\_\_\_ trees keep their  
leaves in winter.

3. Draw a deciduous tree.



# Plant classification (by how they reproduce)



# Evaluation

UNIT 4

3<sup>o</sup> EP. NATURAL SCIENCE TEST.



NAME: \_\_\_\_\_ CLASS: \_\_\_\_\_

## 1. Match.

Trees

are thin, flexible and short

Grasses

have low branches

Bushes

have a thick stem called trunk

## 2. Complete the sentences

photosynthesis deciduous Non-flowering flower

- Plants can be flowering or \_\_\_\_\_
- The reproductive organs are inside the \_\_\_\_\_
- Plants make food. The process is called \_\_\_\_\_
- Trees can be \_\_\_\_\_ or evergreen.

## 3. Match.

The stem

absorb water and minerals. They fix the plant

Roots

Use sunlight to make food.

Leaves

carry water and minerals to the leaves.

## 4. Label the process of photosynthesis.

carbon dioxide water and minerals sunlight



## 5. Identify the plants in the pictures.

fern

angiosperm

gymnosperm

moss

